



Office of Research Overview

Mari Ostendorf, Vice Provost for Research
Joe Giffels, Senior Associate Vice Provost for Research

Welcome to Research at UW!

- **Overview of the UW Research Enterprise**
 - Mari Ostendorf, Vice Provost for Research
- **Overview of sponsored programs & compliance offices**
 - Joe Giffels, Senior Associate Vice Provost
- **20-minute Q&A in breakout rooms with:**
 - Human Subjects Division
 - AI, Data Science & Research Computing
 - Royalty Research Fund Grant Program

More info opportunities ahead

- Tomorrow's in-person onboarding event
 - Trainee Mentoring
 - Speed networking table: meet the VPR and AVPs
- Panel discussions & workshops this fall
 - Competing for Limited Submissions Opportunities (Oct 1, 12-11)
 - International collaboration (w/ Office of Global Affairs)
 - Getting started with your first proposal
 - Working with foundations (w/ Foundation Relations)
 - Getting started with Tillicum (GPU cluster)
 - Communicating research impact (w/ Univ. Marketing & Communications)

Research is foundational to the UW mission

UW research ...

- Contributes to knowledge, new technology, health of people and the planet
- Underpins excellence in education
- Fosters skills that will serve our students in a rapidly changing world

Recognition of impact:

8 Nobel Prize, 6 Medal of Science, 17 MacArthur Fellows

>300 members of national Academies

#2 best public – US News & World Report Global Rankings (2024)

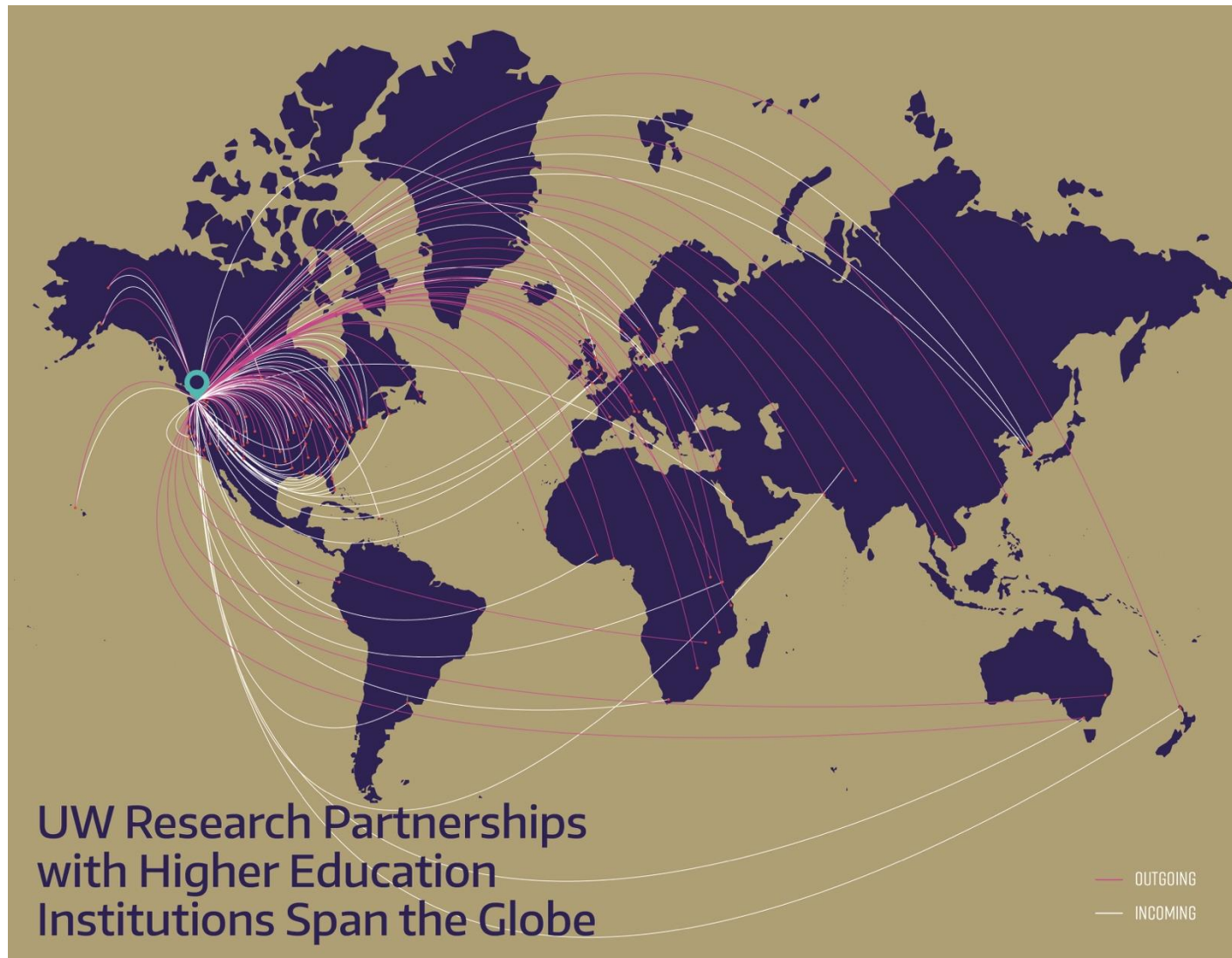
UW's Large-scale Research Enterprise

- FY25: \$1.7B in sponsored grants & contracts (excl. COVID relief)
- #2 in federal funding for many years (2nd only to Johns Hopkins), consistently top 5 external funding
- FY23 economic impact of UW research for Washington state
 - \$2.6B for the state economy sustaining 10,641 jobs throughout the state
 - UW research generated \$63M in state tax revenue + \$30M in local taxes
- Current research funding is characterized by both breadth and depth
 - 17 schools/colleges + Tacoma, Bothell
 - > 1700 sponsors: federal, foundations, industry, state & local gov't, non-profits, ...
- Large undergraduate research program and numerous grad/postdoc training awards

UW Researchers are collaborative!

Research partners span the nation & the globe.

Incoming subawards and outgoing subawards accounted for 31% of the total direct spend in FY25



What makes UW a research powerhouse?

- **Breadth of outstanding faculty**
 - Deep expertise in a huge range of research topics & methods
 - Faculty excellence attracts outstanding grad students & post-docs
- **Extremely collaborative community**
 - Low admin barriers to interdisciplinary collaboration
 - Shared facilities supported by centers & institutes
- **Supportive research ecosystem for faculty-driven initiatives**
 - Distributed research network with a lot of connective tissue
 - Nimble in responding to opportunities, resilient in facing challenges

This combination leads to research with impact that is both local and global, both immediate & long-term.

Why will UW still be a research powerhouse in 5 years?

- **Our foundation**

- Breadth of outstanding faculty
- Extremely collaborative community
- Supportive research ecosystem for faculty-driven initiatives

- **A pro-active response to the evolving research landscape**

- Assess risks and opportunities and identify guiding principles for decision making and strategy
- Work towards decreasing the cost of research and identifying new revenue streams
- Support faculty and staff in navigating the changing research landscape
- Improve our messaging about the value of research

Office of Research (OR)

- **OR Vision:**

We cultivate a world class research ecosystem that catalyzes and supports discovery and innovation with local and global impact.

- **Mission:**

- Foster and promote excellence in research and scholarship
 - Seeding new initiatives, facilitating partnerships, promoting UW research impacts
- Support the infrastructure that this work demands
 - Minimizing admin burden, strengthening shared facilities, building connections

- **Leadership: Vice Provost & Assoc/Asst Vice Provosts**



Mari
Ostendorf



Joe Giffels



Cecilia
Giachelli



Sara Curran



Sally
Thompson-
Iritani



Ting Cao



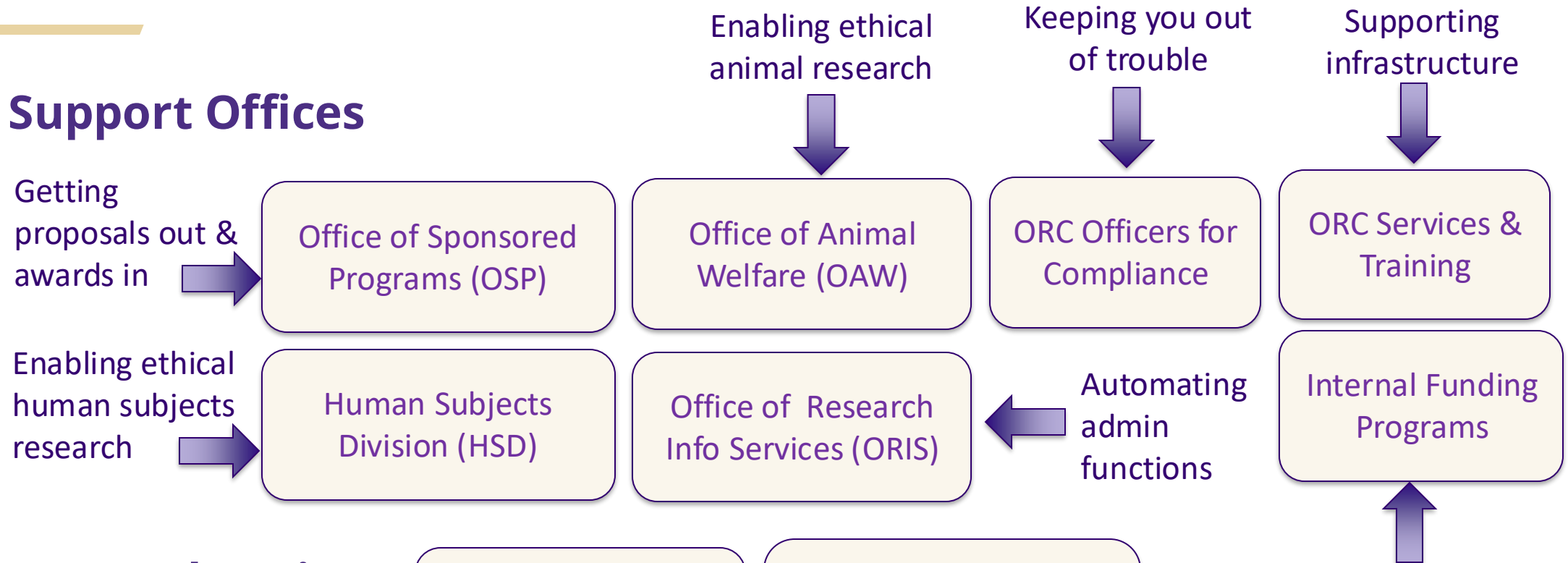
Andy
Connelly



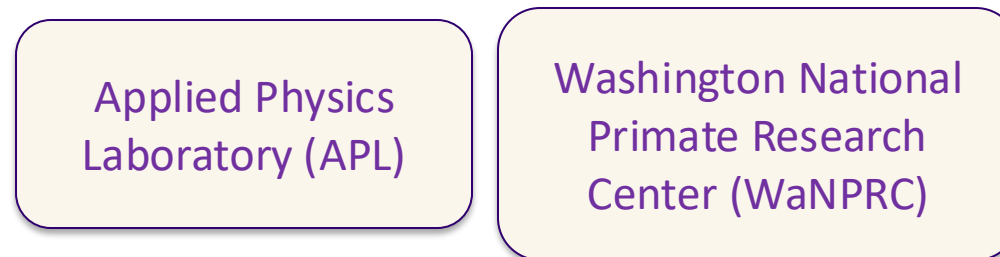
Adam Wojno

Office of Research Units

- **Support Offices**



- **Research Units**



- **eScience Institute & Research Cyberinfrastructure**

More info in the
AI/computing
breakout session

Sponsored Research

More info in a future
OSP panel discussion

- **OSP supports you at the proposal stage**
 - Web resources about sponsors, alerts to limited submissions
 - Matching funds, if required
 - Letter of support, if required
 - Automation to facilitate the submission process
- **and once you get an award**
 - Contract negotiation (sponsors & subawards)
 - Modifications, no-cost extensions,
- **An education team develops & offers**
 - Grants management & other research training

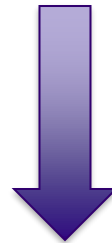
With Chair & Dean support

Research Compliance

Internal Controls

Risk

- University
- School/College
- Department
- Researcher



Integrity of
Research



Minimize operational/administrative burden

Research Compliance (cont.)

Responsibility - PI/Dept/School or College

Facilitation – Central Compliance Offices

- Information / Training / Awareness
- Administrative Systems and Tools
- Coordination with Other Central Compliance Offices
- Monitoring and Ensuring Compliance

More info in the HSD breakout
& speed networking sessions

Research compliance offices:

- Within OR: Animal welfare, human subjects, financial conflict of interest, research security & export control, embryonic stem cells
- Other units: biosafety, environmental health & safety, grant accounting

Limited Submission Opportunity (LSO)

More info in a zoom discussion on Oct 1

- What is an LSO?
Grants, awards and fellowships that limit the number of applications coming from one institution
- Types of opportunities that may be limited
Major research instrument grants, large multi-PI projects (NSF STC, NIH U01), NSF training grants, foundation awards (Keck, Packard, Searle, Beckman)
- LSO announcements go to Deans, Directors & Chairs, but you can also subscribe: email limitedsubs@uw.edu
- Look for LSOs: <http://depts.washington.edu/research/funding/limited-submissions>

Royalty Research Fund (RRF) Grant Program

- **Competitive awards program for faculty in all disciplines in the UW research community**
- **Funded by a portion of the royalty returns**
- **Purpose: To advance new research**
 - for faculty who are junior in rank, and/or
 - in cases where funding may provide unique opportunities to increase applicants' competitiveness for subsequent funding, and/or
 - in disciplines for which external funding opportunities are minimal.
- **Over its 33-year history, the RRF has:**
 - made 2,158 peer-reviewed awards, and
 - distributed >\$63 million across all three UW campuses.

More info in the RRF
breakout session

<https://www.washington.edu/research/or/royalty-research-fund-rrf/>



W

Q&A

Breakout Q&A with OR Staff

- Human Subjects Division
- AI, Data Science & Research Computing
- Royalty Research Fund Grant Program

Note: You can go to multiple breakouts for Q&A, but most will have some sort of intro in the beginning.