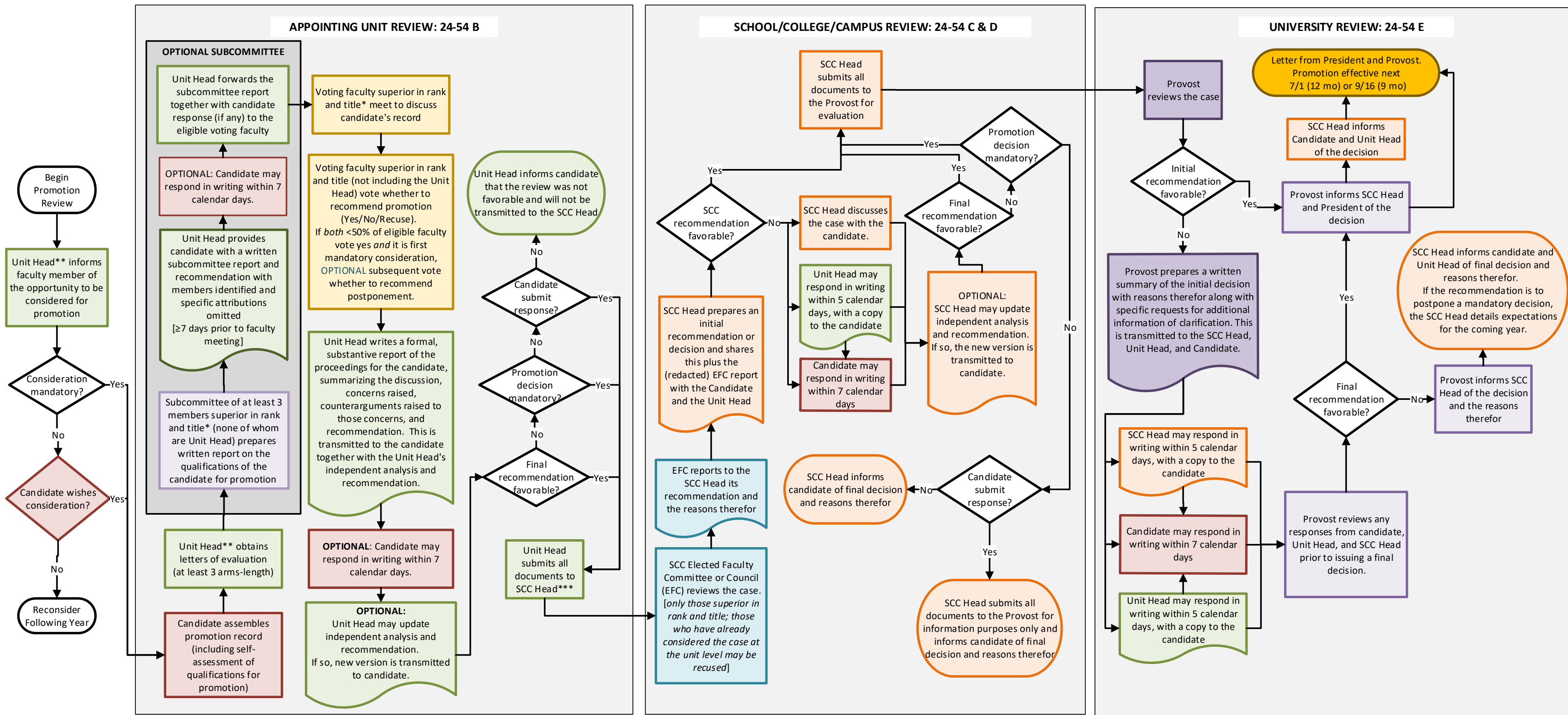


PROMOTION FLOW CHART FOR APPOINTING UNITS WITH ≥ 3 ELIGIBLE VOTING FACULTY*



NOTE: At any time prior to the Provost issuing a final decision, the candidate may withdraw from consideration or submit a factual correction.

Last Update July 16, 2024



* See Faculty Code 21-32 for who is eligible to vote in a particular case. Provost guidance says the Unit Head is not considered in the count of eligible faculty, as they contribute independent analysis.

**Unit Head = Executive officer of the appointing unit (Department Chair, School Director, Campus Dean). In case of conflict of interest, the SCC Head designates an acting Unit Head for the case. Referred to as "chair" in Faculty Code 24-54.

***SCC Head = Executive officer of the school, college, or campus (Dean, Chancellor) or their designee. Referred to as "dean" in Faculty Code 24-54.

NOTE: The Faculty Code ascribes a dual role to SCC Heads in undepartmentalized schools and colleges. Best practice is for the SCC Head to designate an acting Unit Head for the appointing unit portion of the review so there are two independent assessments.

NOTE: There is no provision in the faculty code for appointing units that have further subdivisions. If an appointing unit chooses to have an additional review at the subdivision level, any documents generated should be shared with the candidate with a 7 day response window in a similar manner to the Appointing Unit Review steps.